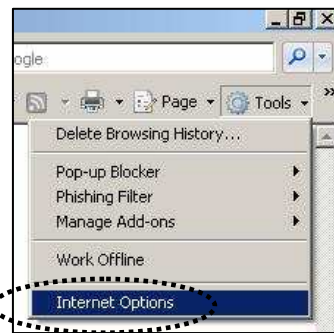


## Using Reaxys off-campus for the first time: Internet Explorer users

Before you use Reaxys off-campus, you must change the security settings on your web browser.

- i. Open Internet Explorer and click on **Tools** > **Internet Options**



- ii. Click on the **Advanced** tab, go to the bottom of the **Settings** area and *deselect* the "**Warn about certificate address mismatch**" checkbox. Click on **Apply** and **OK**.

You can now use Reaxys off-campus on this browser. If you have any problems, contact [library@dcu.ie](mailto:library@dcu.ie).

