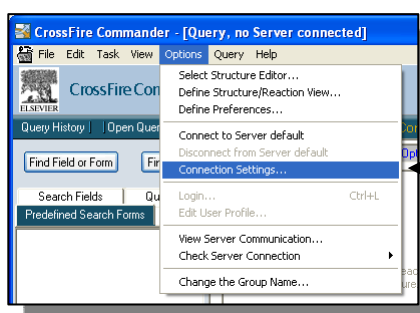


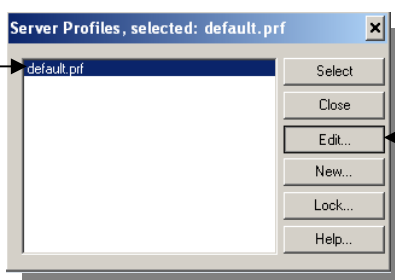
CrossFire update, November 2009

1. Open CrossFire (*Start > Programs > CrossFire Commander 7.1 > CrossFire Commander 7.1*)
2. You will be asked for a username and password. Click on **Cancel** to close this box.
3. A popup will ask “*Cancel or Disconnect button pressed. Connection Will be closed. Reconnect*”. Click on **No**. A message box will appear. Close it.

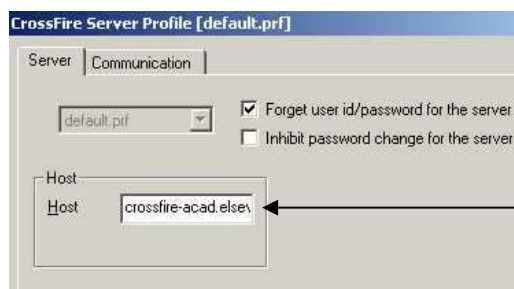
4. Click on **Options > Connection Settings**.



5. Select **default.prf** and click on **Edit**.

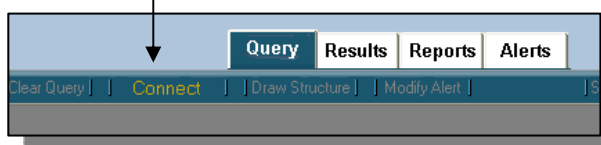


6. Change the **server host** from **xfire.mimas.ac.uk** to **crossfire-acad.elsevier.com**



7. Click on **OK** and **Close**.

8. Click on **Connect**.



Contact Jack Hyland
jack.hyland@dcu.ie if you have any problems.